

PART OF THE SW.1/4, OF SECTION 21, T.7N., R.1E., S.L.B. & M.

298

RIVER WOOD ESTATES SUBDIVISION

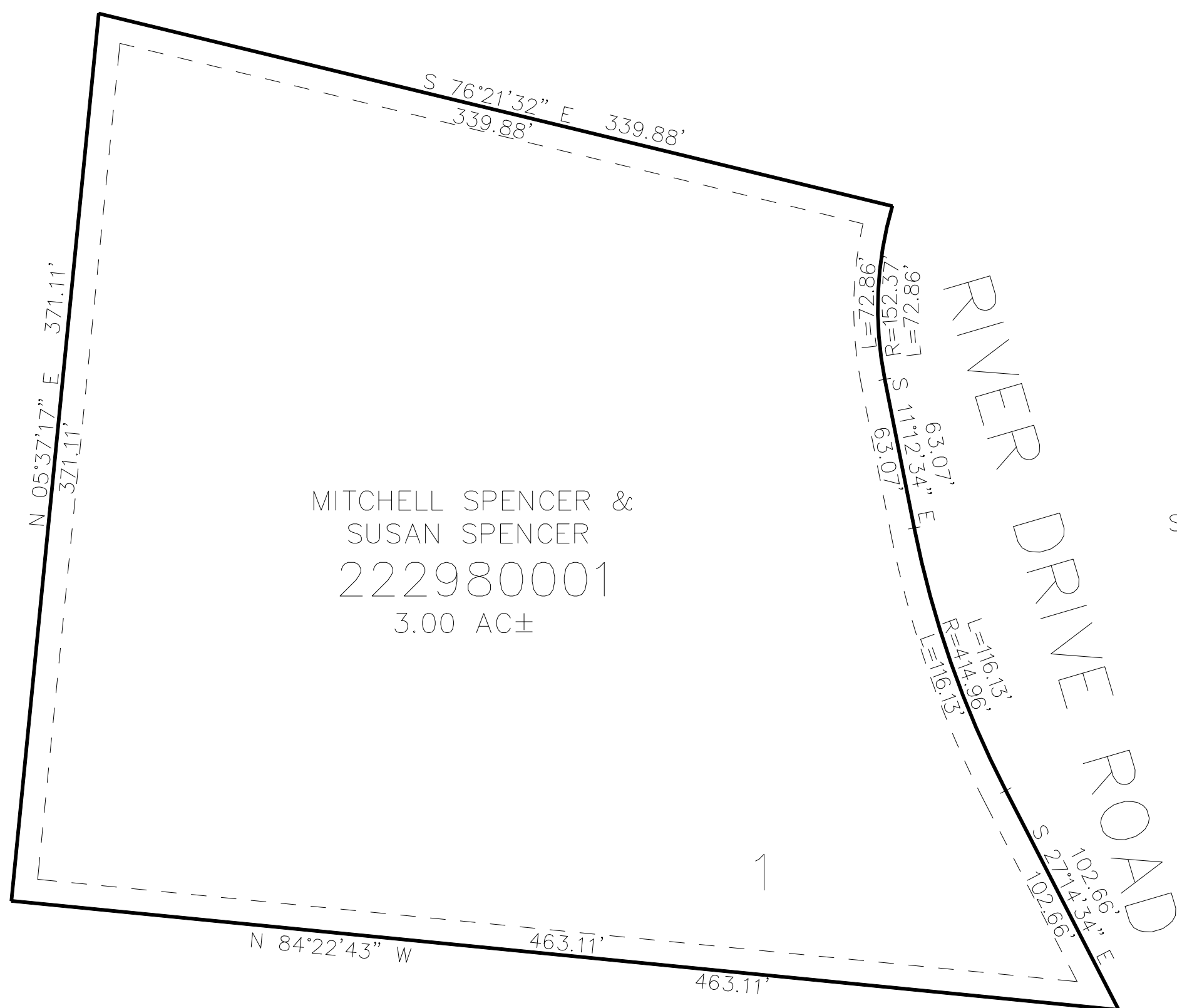
IN WEBER COUNTY

TAXING UNIT: 36

SCALE 1" = 50'

SEE PAGE 15-3

SEE PAGE 15-3



SEE PAGE 15-3

SEE PAGE 15-3

10' UTILITY & DRAINAGE EASEMENTS EACH
SIDE OF PROPERTY LINES AS INDICATED
BY DASHED LINES EXCEPT AS OTHERWISE
SHOWN.

FOR COMPLETE ENG DATA SEE
ORIGINAL DEDICATION PLAT IN
BOOK 69, PAGE 94 OF RECORDS.